

LINDENBERG ANLAGEN



Company Profile

LINDENBERG ANLAGEN Company Profile 2007

Lindenberg-Anlagen GmbH



Introduction

History...



Technology & Experience since 1948

LINDENBERG ANLAGEN Company Profile 2007

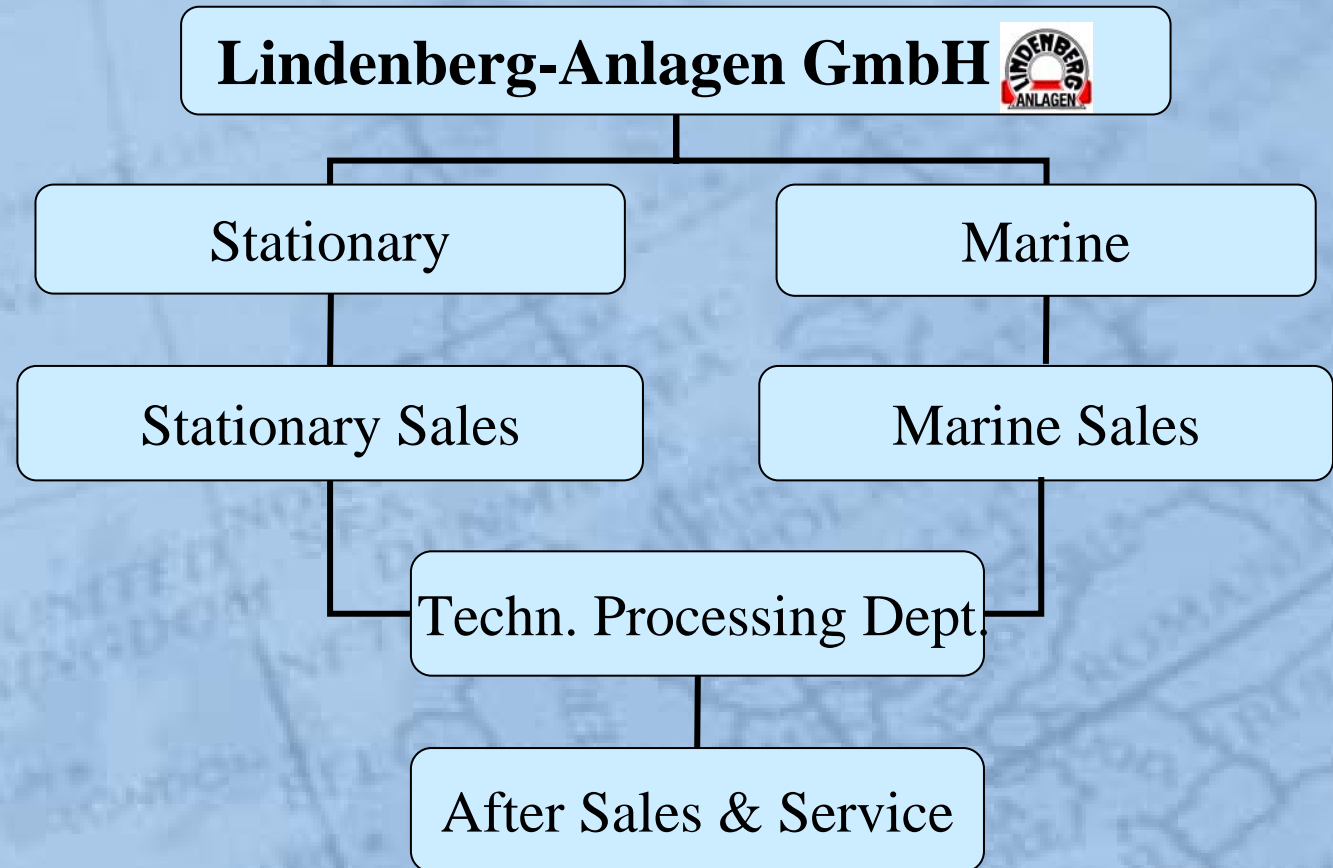
Lindenberg-Anlagen GmbH



Lindenberg-Anlagen GmbH



Lindenberg Organigramm



Lindenberg-Anlagen GmbH



Lindenberg-Anlagen GmbH



Foundation: 1948 by Karl Lindenberg

Type of Company "GmbH: Private Limited Liability Company (private property).

Turnover: 55 Mio. Euro

Staff: approx. 170 employees

Management: Dipl.-Ing. (FH) Olaf Berghoff

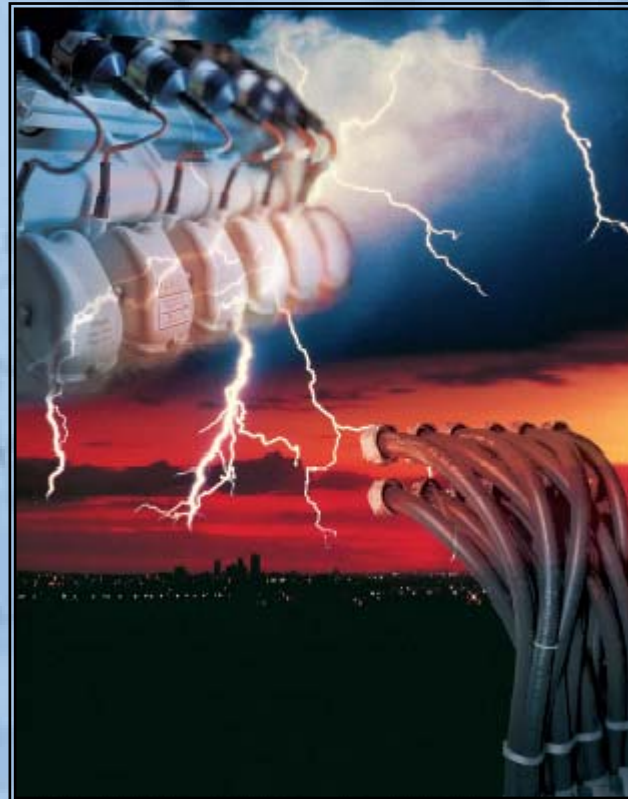
*Location: Auf der Grefenfurth 25 - 27
51503 Rösrath-Kleineichen*

*Contact: +49 / (0) 2205 / 8009 – 0 Operator
+49 / (0) 2205 / 8009 – 111 Fax
Postmaster@Lindenberg-Anlagen.de*

Lindenberg-Anlagen GmbH



Stationary



Stationary



Product Range

Power Plants

Cogeneration Units und Gas-Generators:

- *Natural Gas, Bio Gas, Sewage Gas , Wellhead Gas*
- *Vegetable Oil (Rapeseed Oil, Palm Oil, Soy Oil)*
- *Capacity: 50 kW – 4000 kW*

Diesel Gen-Sets, Black Start Diesel:

- *Capacity : 500 kVA – 3000 kVA*

Containerized Modules

Switchboards

Oil & Gas:

- *Mechanical Drives for Hazardous Areas*

Lindenberg-Anlagen GmbH



Marine

An advertisement for Lindenberg Anlagen's marine division. It features a speedometer in the top left corner with a needle pointing to approximately 18 RPM. The text 'We are at your disposal' is prominently displayed in the center. Below this, a large cruise ship is shown at sea. At the bottom, a MAN engine is depicted with the text 'Auxiliary and Emergency Marine Gen-Sets Powered by MAN Engines'. The Lindenberg Anlagen logo is in the top right, and the MAN logo is in the bottom left.

LINDENBERG ANLAGEN
Marine
Commercial
Worldwide

We are at your disposal

GEN-SET IN OPERATION

MAN
Auxiliary and Emergency
Marine Gen-Sets
Powered by MAN Engines

Marine



Product Range

Auxilliary Gen-Sets

-Capacity: 33 kW – 590 kW

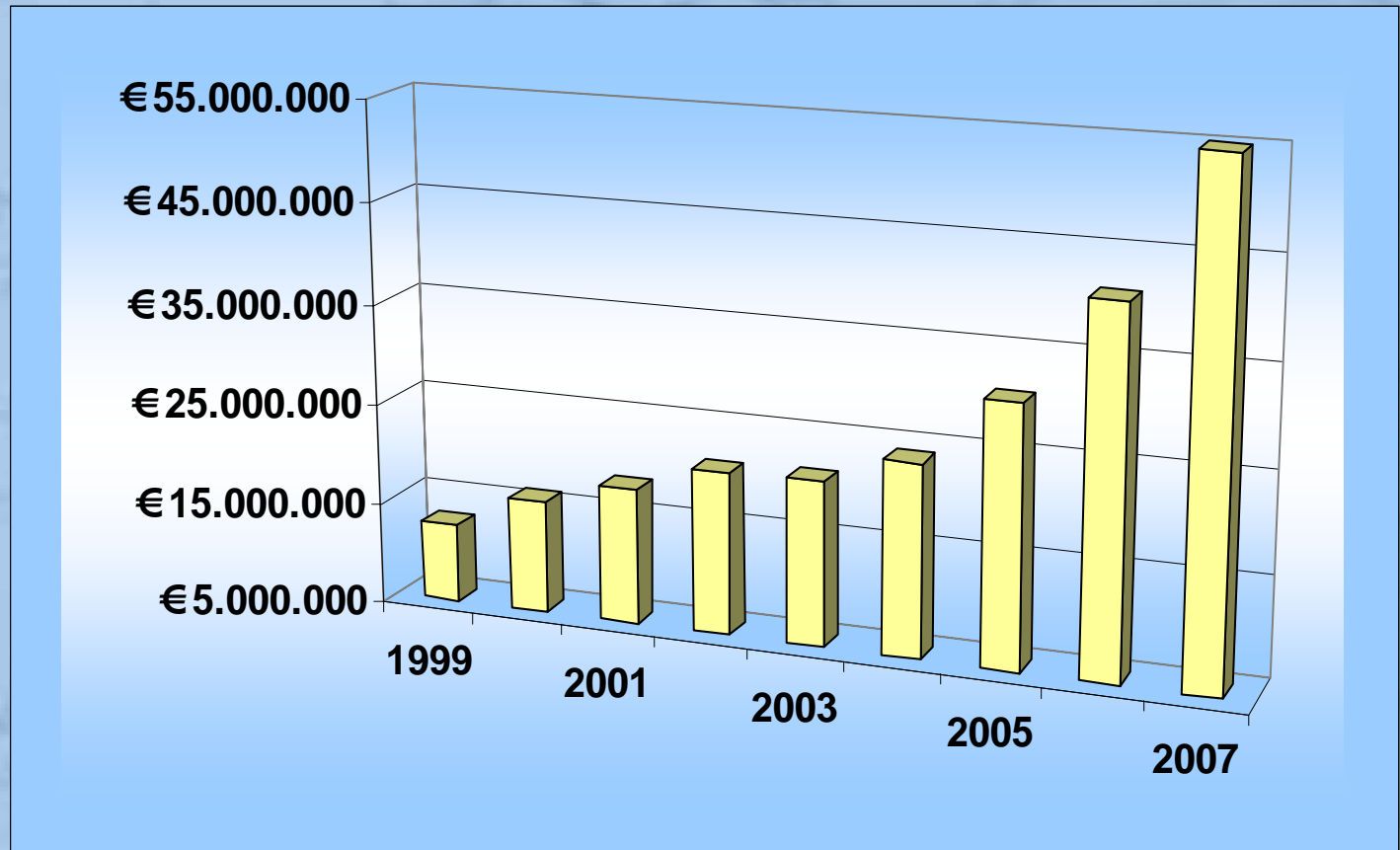
Emergency Gen-Sets

-Capacity: 85 kW – 600 kW

Harbour Gen-Sets

- Capacity: 85 kW – 575 kW

Company Development



Development of Turnover 1999 - 2007

Lindenberg-Anlagen GmbH



Power Plants

Power Plants

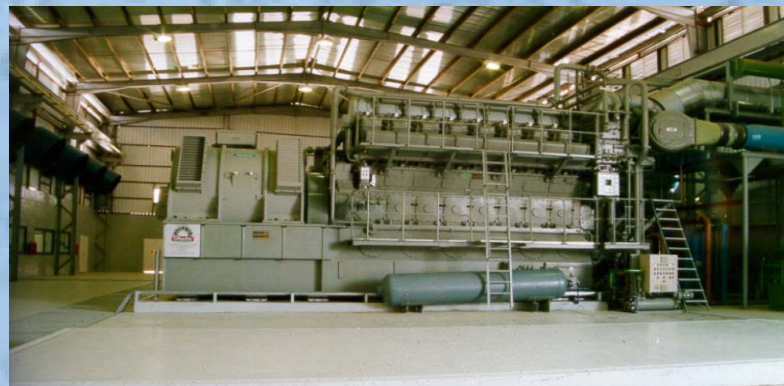


Power Plant in Saudi Arabia
4 x Deutz BV16M640 Diesel/HFO/Crude Oil in 1996

Power Plants *Crude Oil*



ENGINE : DEUTZ - MWM BV 16 M 640
ALTERNATOR : SIEMENS 1 JG 3310 - 4HV 06-Z



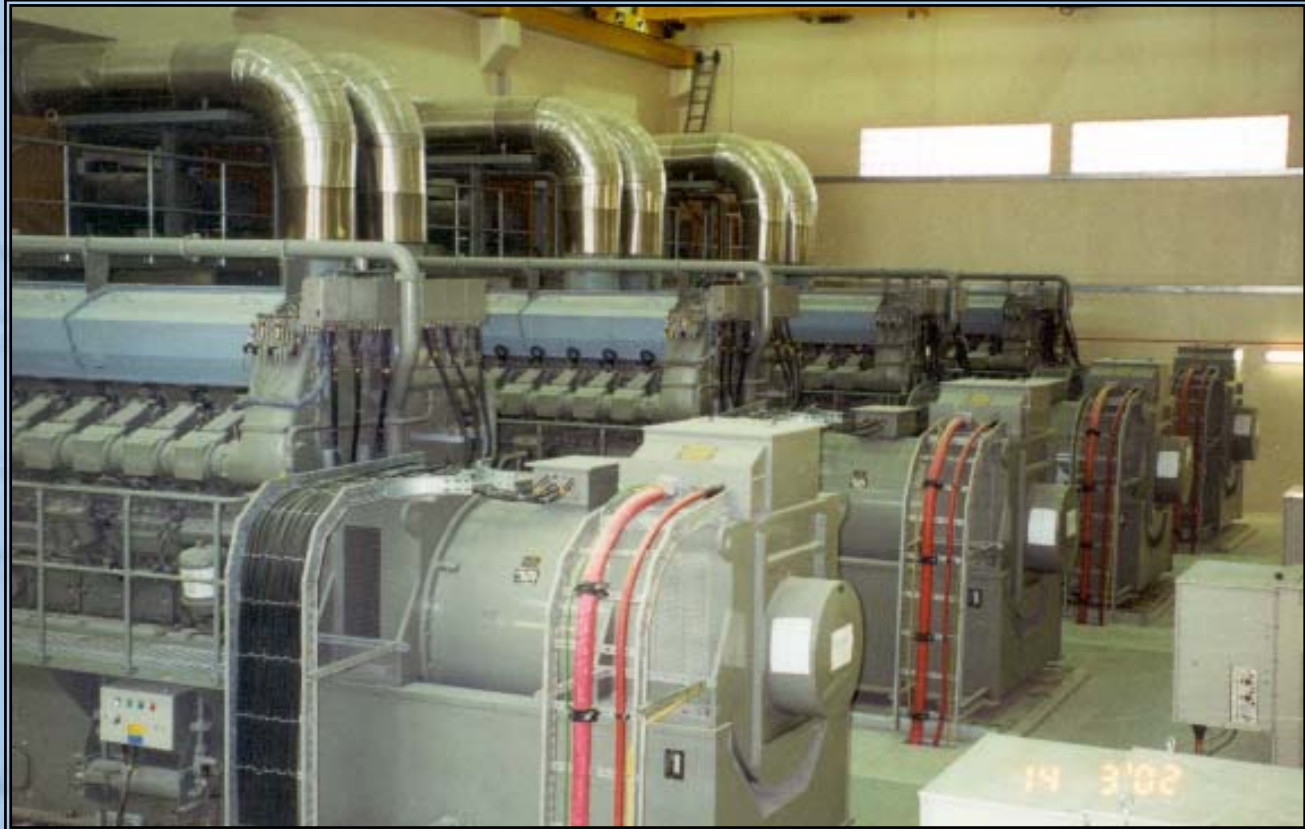
Power Plants



Power Plants



Power Plants

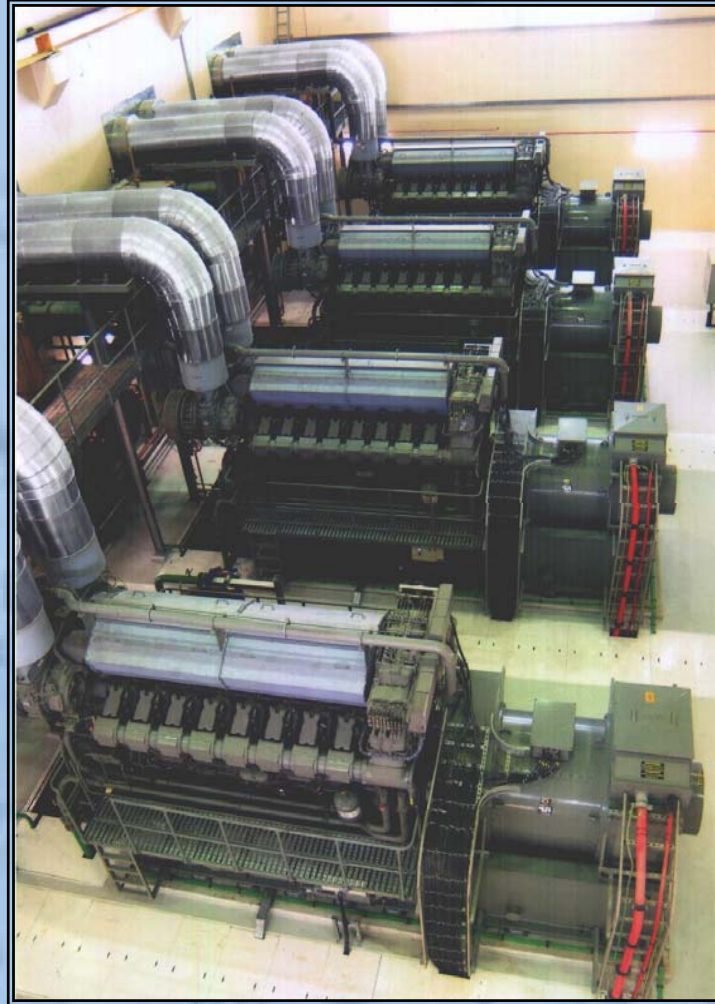


Abu Dhabi Sheikh Palaces
4 x Deutz BV16M628 Diesel in 2001

Power Plants



Power Plants



Lindenberg-Anlagen GmbH



Cogeneration Units

Cogeneration Units



Engine Manufacturer

MAN Nürnberg

-Capacity: 50 kW – 400 kW

Deutz

-Capacity: 350 kW – 4000 kW

Guascor

-Capacity: 300 kW – 1000 kW

MTU

-Capacity: 1200 kW und 1600 kW

Waukesha

-Capacity: 300 kW – 3300 kW

-Hotcooling possible

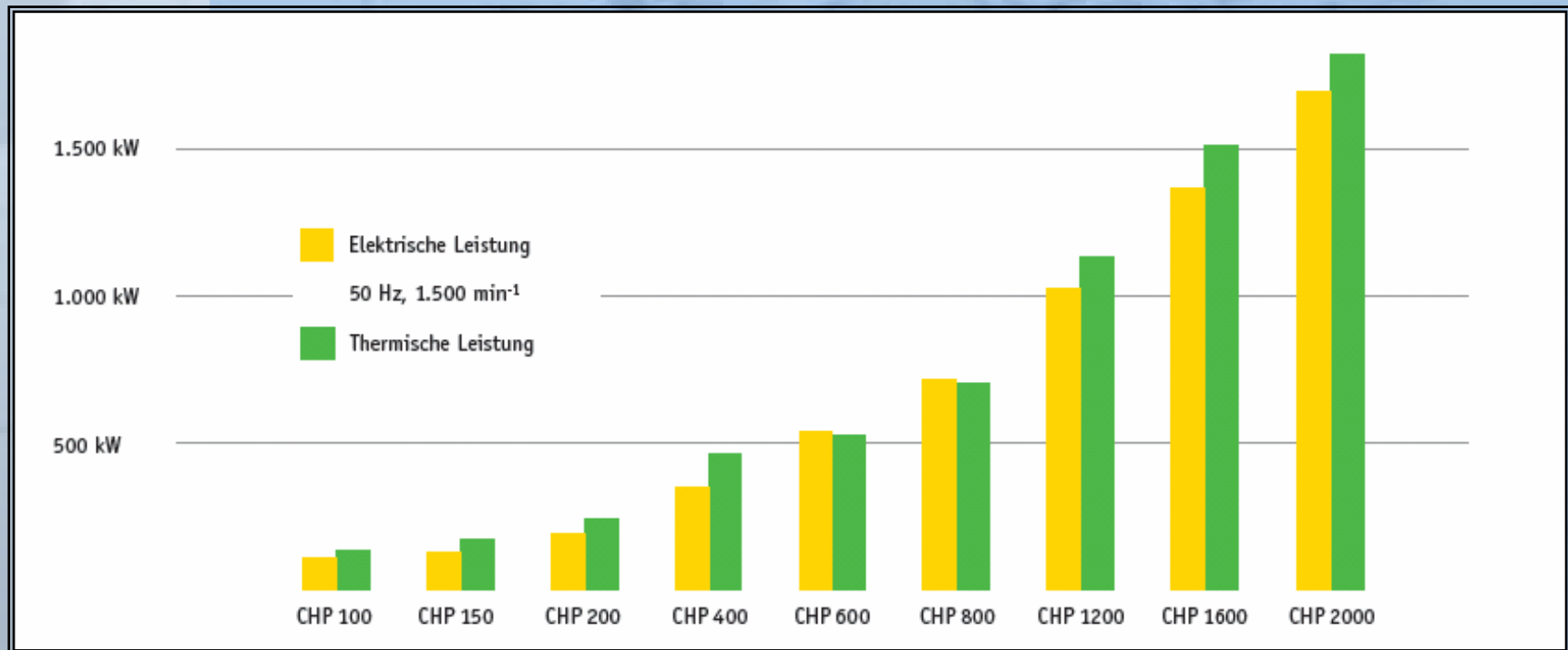
Perkins

-Capacity: 300 kW – 1000 kW

Cogeneration Units



Overview Cogeneration Units (biogas application)

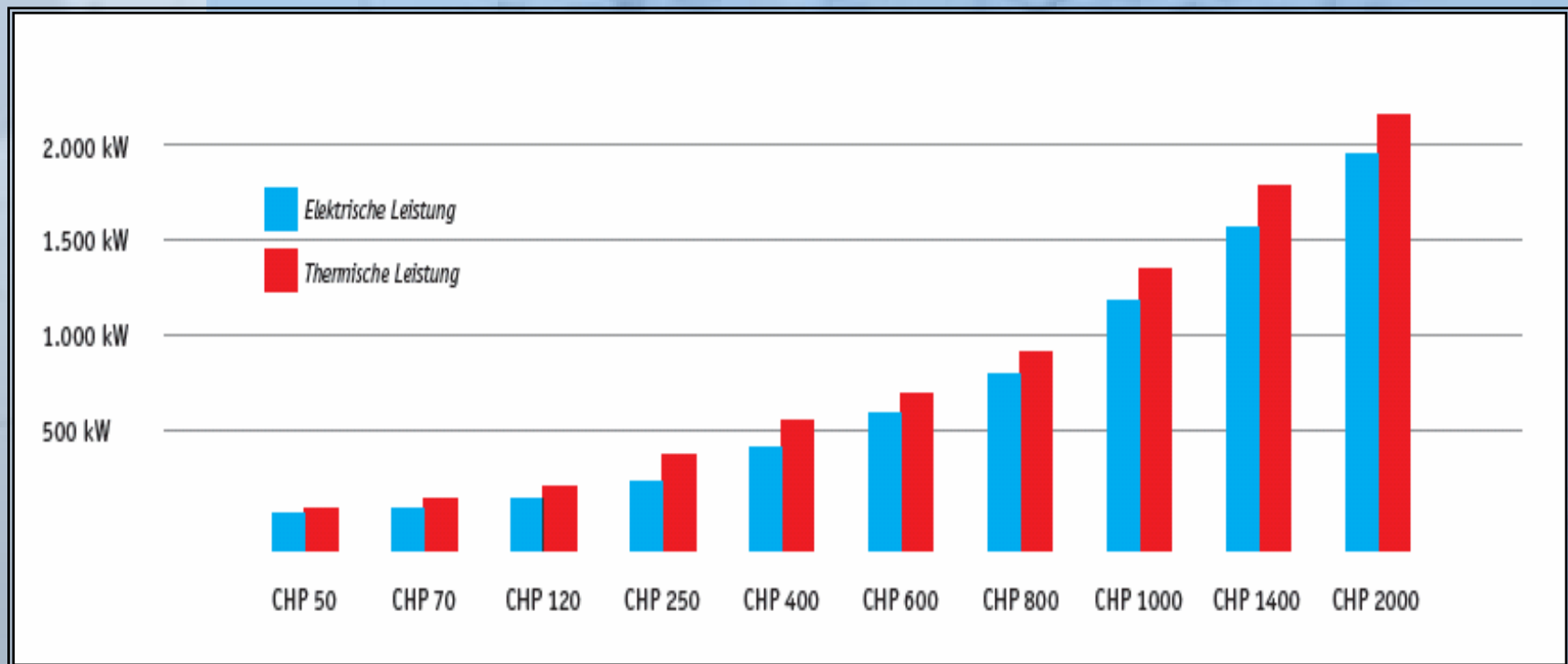


other capacities on request

Cogeneration Units



Overview Cogeneration Units (natural gas application)

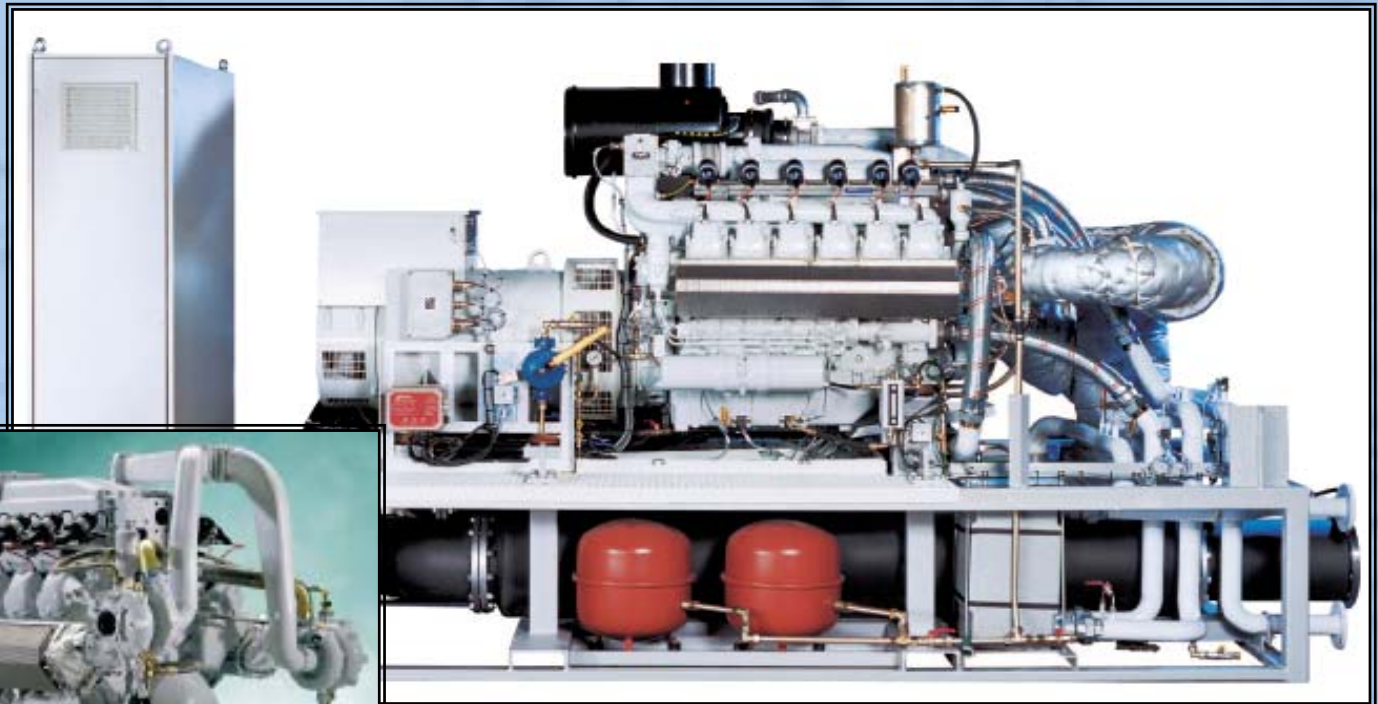


other capacities on request

Cogeneration Units



Cogeneration Units with MAN Gas Engines



MAN Gas Engine E 2842 LE 312

BHKW CHP 400

Cogeneration Units



Cogeneration Units with MAN Gas Engines

Naturally Aspirated Engine, Rich Burn



MAN Gas Engine E 0834 E 302



MAN Gas Engine E 0836 E 302



MAN Gas Engine E 2876 E 302



MAN Gas Engine E 2842 E 312

Cogeneration Units



Cogeneration Units with MAN Gas Engines

Turbocharged Engines, Lean Burn



MAN Gas Engine E 0836 LE 202



MAN Gas Engine E 2876 TE 302



MAN Gas Engine E 2876 LE 302



MAN Gas Engine E 2842 LE 312

Cogeneration Units



CHP (2 x 347 kW, MAN) for
Biogas in Bersenbrück
(Germany)



Cogeneration Units



CHP for Swimming Pool in Germany (386 kW, MAN)

Cogeneration Units



Compressor Drive for Food Industry in Germany (350 kW, Deutz)

Cogeneration Units



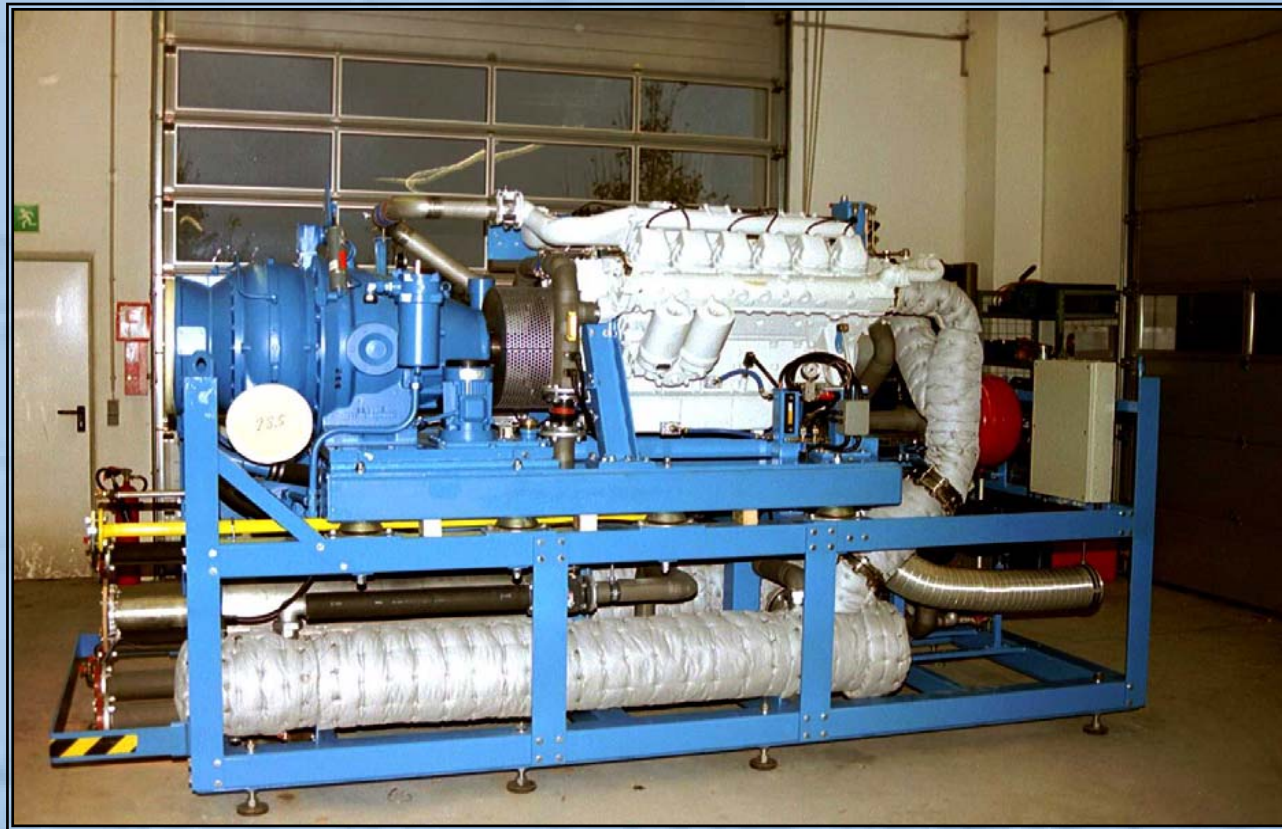
CHP, Iksan Mohyun Appartments, Korea (2 x 327 kW, MAN)

Cogeneration Units



Compressor Drive for Heat Pump in Germany (Waukesha)

Cogeneration Units



Gas Blower for Sewage Plant in Yanzhou und Qufu, China

Cogeneration Units



Containerized Cogeneration Unit & Switchboards for vegetable oil

Cogeneration Units



Selected References:

No.	Customer	Year	Land	Modul-Typ	Power Output
17135	Aggertal	2002	D	MAN E2842 LE 312	1x386 kW
11771	Kenertec; Seoul	2003	Korea	MAN E2842 LE 302	2x327 kW
11773	Kenertec; Seoul	2003	Korea	MAN E2842 LE 312	1x385 kW
11780	TechnoServ AS	2004	Russland	Waukesha VGF L36 GSI	1x470 kW
11780	TechnoServ AS	2004	Russland	Waukesha VGF P48 GSI	1x625 kW
11788	Kenertec; Seoul	2004	Korea	MAN E2842 LE 302	3x327 kW
11806	Steinecke WKK	2005	D	MAN E2876 E 302	1x133 kW
11808	IFS; Bersenbrück	2005	D	MAN E2842 LE 312	2x347 kW
11815	Kenertec; Seoul	2005	Korea	MAN E2842 E 312	1x268 kW
17139	Hochwald	2005	D	Deutz TBG616V8K	1x350 kW
11820	Badenborn Gbr	2005	D	MAN E2842 LE 312	2x347 kW
11829	Brochier	2006	D	Deutz TBG616V12K	2x469 kW
11830	Xergi, Dänemark	2006	D	Deutz TCG2016V12	1x537 kW
11002	Airbus Stade	2006	D	Waukesha VGF P48GSID	3x637 kW
11004	Agrokombinat	2007	Belarus	MTU 16V4000	1x1550 kW

Lindenberg-Anlagen GmbH



Containerized Modules

Containerized Modules



Containerized Modules with MTU 16V 4000 Engine for Emergency Power Supply

Containerized Modules



Containerized Modules with MTU 16V 4000 Engine for
Emergency Power Supply

Containerized Modules



Container for Cogeneration Unit (vegetable oil) 210 kWel

Containerized Modules



Containerized Gas Gensets 2 x 1,2 MW (Waukesha) for Wintershall (Germany); Power Supply for Oil Field in Libya

Containerized Modules



Containerized Module Deutz BV12M 628, 3500 kVA
Container (L x B x H : 20 m x 3,5 x 4,5 m, Weight 50 t)

Lindenberg-Anlagen GmbH



Switchboards

Switchboards



Switchboard-Workshop

Switchboards



Switchboard-Mounting

Switchboards



Switchboard for Pipeline-Pump (Sudan, Africa)

Switchboards



Switchboard for Cogeneration Unit

Switchboards



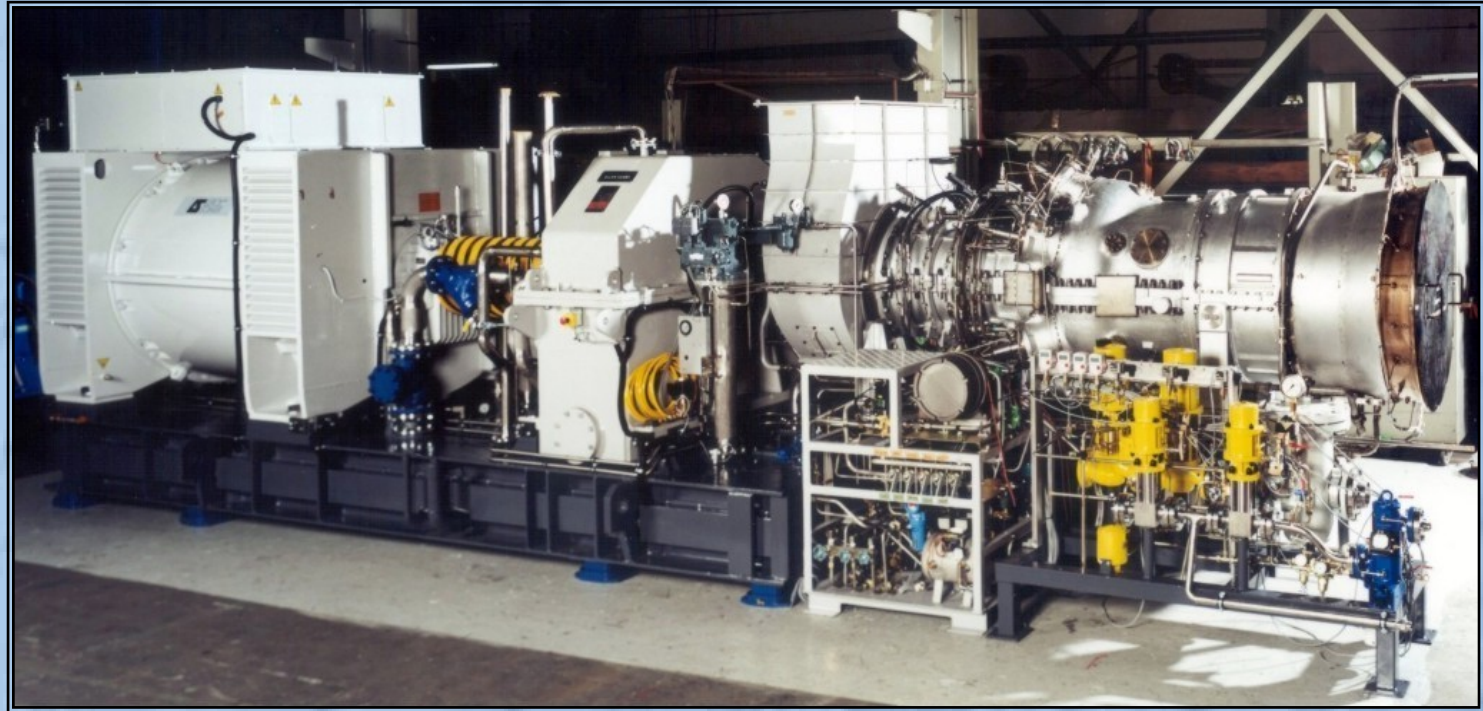
Switchboards for Krupp-Uhde

Lindenberg-Anlagen GmbH



Gas Turbines

Gas Turbines



Kawasaki Gas Turbine 7 MW
packaged by Lindenberg-Anlagen

Lindenberg-Anlagen GmbH



Mechanical Drives

Mechanical Drives



Pipeline Pumps for Bornemann (Workshop Lindenberg)

Mechanical Drives



Special Design
Industrial Power Applications: NFPA Oil Field Fire Pump

Mechanical Drives



Mobile Low- and High Pressure Pumps,
Special Design for NATO

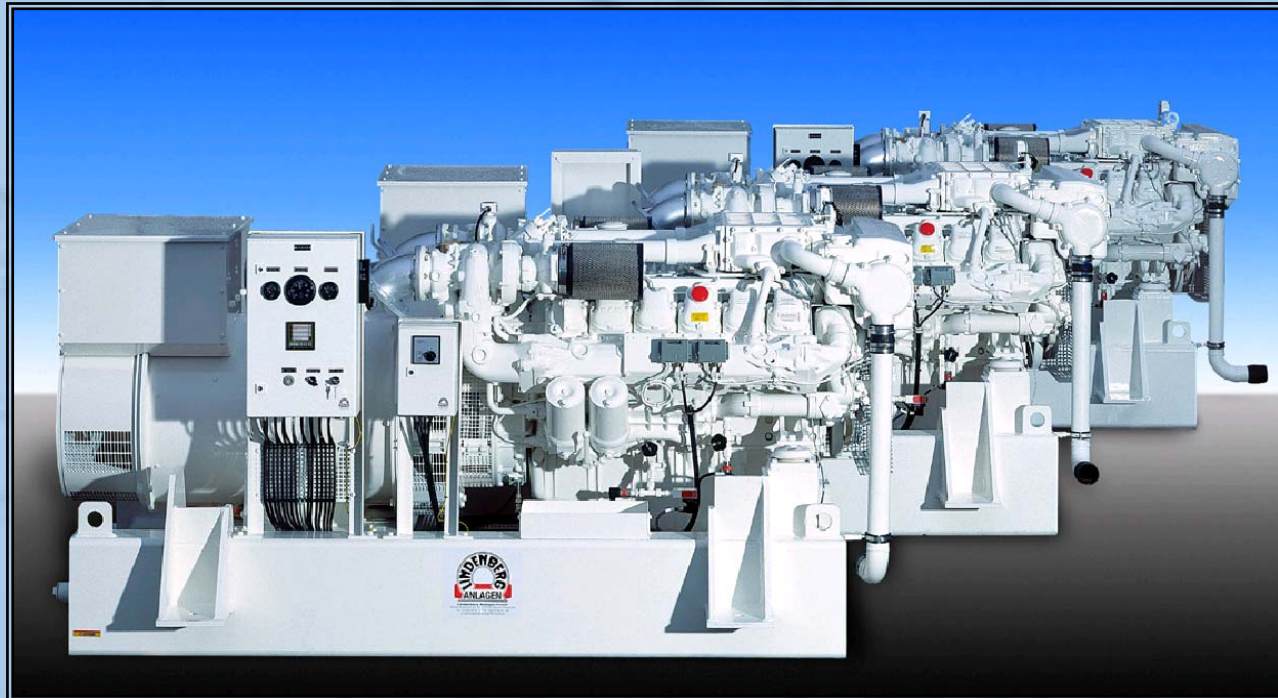


Lindenberg-Anlagen GmbH



Marine Gen-Sets

Marine Gen-Sets



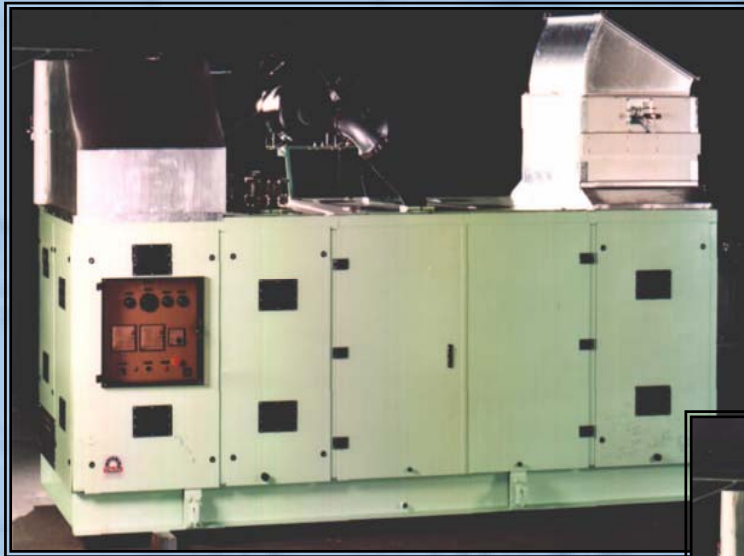
Marine Gen-Sets with MAN Diesel-Engines

Marine Gen-Sets

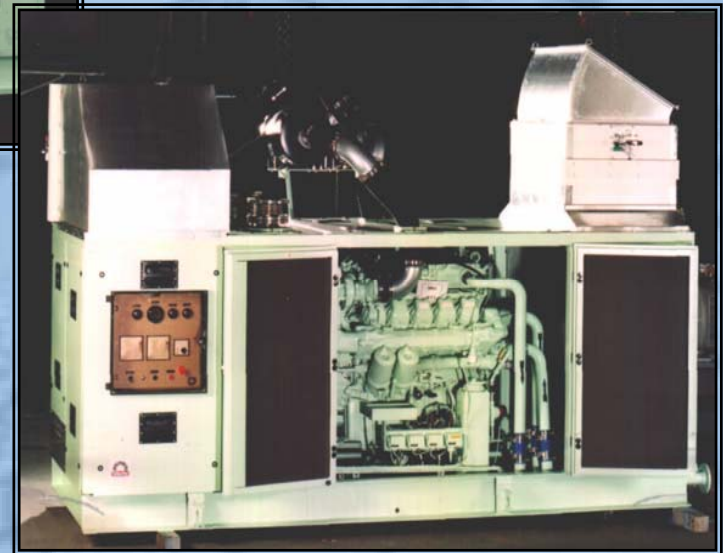


Marine Gen-Set for Emergency Power Supply

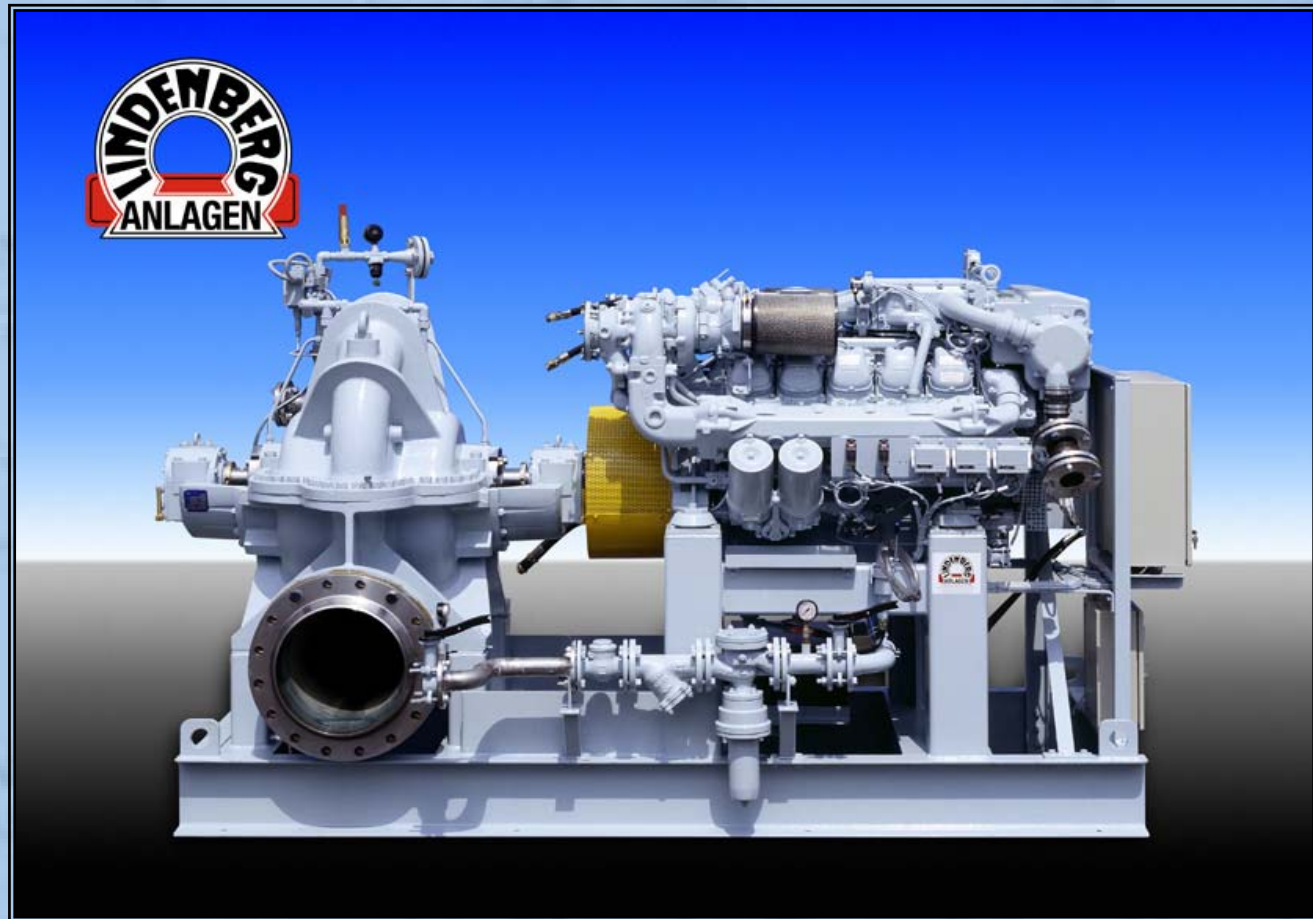
Marine Gen-Sets



Sound Proof Marine
Gen-Sets



Marine Mechanical Drives



Lindenberg-Anlagen GmbH



Certifications

Certifications



Certifications



Lindenberg-Anlagen GmbH



Thank you for your attention

